

BALDOR • RELIANCE

Customer information packet

VJPFPM2551T-5

75HP, 1770RPM, 3PH, 60HZ, 365JP, 4272M, OPSB, F

Specifications

Enclosure	OPSB
Frame	365JP
Frame Material	Steel
Frequency	60.00 Hz
Motor Letter Type	Three Phase
Output @ Frequency	75.000 HP @ 60 HZ
Phase	3
Synchronous Speed @ Frequency	1800 RPM @ 60 HZ
Voltage @ Frequency	575.0 V @ 60 HZ
Agency Approvals	CSA EEV UL
Ambient Temperature	40 °C
Auxillary Box	No Auxillary Box
Auxillary Box Lead Termination	None
Base Indicator	No Mounting
Bearing Grease Type	Polyrex EM (-20F +300F)
Blower	None
Current @ Voltage	69.000 A @ 575.0 V
Design Code	B
Drip Cover	Drip Cover
Duty Rating	CONT
Efficiency @ 100% Load	94.1 %
Electrically Isolated Bearing	Not Electrically Isolated
Feedback Device	NO FEEDBACK
Front Face Code	Standard
Front Shaft Indicator	None
Heater Indicator	No Heater
High Voltage Full Load Amps	69.0 a
Insulation Class	F
Inverter Code	Not Inverter
KVA Code	F
Lifting Lugs	Vertical Lifting Lugs

Part detail

Revision	E
Type	AC
Mech. spec.	42E338
Base	
Status	PRD/A
Elec. spec.	42WGX104
Layout	42LYE338
Eff. date	01-11-2022
CD Diagram	CD0382
Poles	04
Leads	6#8
Proprietary	False
Created date	07-22-2016

Locked Bearing Indicator	Locked Bearing
Motor Lead Exit	Ko Box
Motor Lead Quantity/Wire Size	6 @ 8 AWG
Motor Lead Termination	Flying Leads
Motor Standards	NEMA
Motor Type	4272M
Mounting Arrangement	F1
Number of Poles	4
Overall Length	34.50 IN
Power Factor	86
Product Family	Fire Pump Motor
Pulley End Bearing Type	Ball
Pulley Face Code	C-Face
Pulley Shaft Indicator	Tapped & Key
Rodent Screen	Included
Service Factor	1.15
Shaft Diameter	1.577 IN
Shaft Extension Location	Pulley End
Shaft Ground Indicator	No Shaft Grounding
Shaft Rotation	Reversible
Shaft Slinger Indicator	Shaft Slinger
Speed	1770 rpm
Speed Code	Single Speed
Starting Method	Wye Start - Delta Run
Thermal Device - Bearing	None
Thermal Device - Winding	None
Vibration Sensor Indicator	No Vibration Sensor
Winding Thermal 1	None
Winding Thermal 2	None

Nameplate

NP3454L

CAT.NO.	VJPFPM2551T-5	CUST P/N		I.P.	23
SPEC.	42E338X104H2	SER.NO.		FRAME	365JP
HZ	60	HP	75	RPM	1770
VOLTS	575	CODE	F	VOLTS	
AMPS	69	DES	B	AMPS	
EFF	94.1	SER.F.	1.15	PF	86
RATING	40C AMB-CONT	DE BRG	6313	GREASE	POLYREX EM
BLANK		ODE BRG	6311	MTR. WT.	565
		CLASS	F	PH	3
		ENCL	OPSB	CC	010A
HTR-VOLTS		HTR-AMPS		HTR-WATTS	

AC Induction Motor Performance Data

Record # 58313

Typical performance - not guaranteed values

Winding: 42WGX104-R001		Type: 4272M		Enclosure: OPSB	
Nameplate Data			575 V, 60 Hz: Single Voltage Motor		
Rated Output (HP)	75	Full Load Torque	222 LB-FT		
Volts	575	Start Configuration	direct on line		
Full Load Amps	69	Breakdown Torque	585 LB-FT		
R.P.M.	1770	Pull-up Torque	301 LB-FT		
Hz	60 Phase	Locked-rotor Torque	348 LB-FT		
NEMA Design Code	B KVA Code	Starting Current	402 A		
Service Factor (S.F.)	1.15	No-load Current	21.7 A		
NEMA Nom. Eff.	94.1 Power Factor	Line-line Res. @ 25°C	0.141 Ω		
Rating - Duty	40C AMB-CONT	Temp. Rise @ Rated Load	60°C		
S.F. Amps		Temp. Rise @ S.F. Load	75°C		
		Locked-rotor Power Factor	26.6		
		Rotor inertia	9.59 LB-FT ²		

Load Characteristics 575 V, 60 Hz, 75 HP

% of Rated Load	25	50	75	100	125	150	S.F.
Power Factor	56	76	83	86	86	86	86
Efficiency	93	94.9	94.7	94.3	93.4	92	93.8
Speed	1794	1788	1780	1772	1763	1752	1767
Line amperes	27.1	38.7	53.1	69.3	87.2	107	80

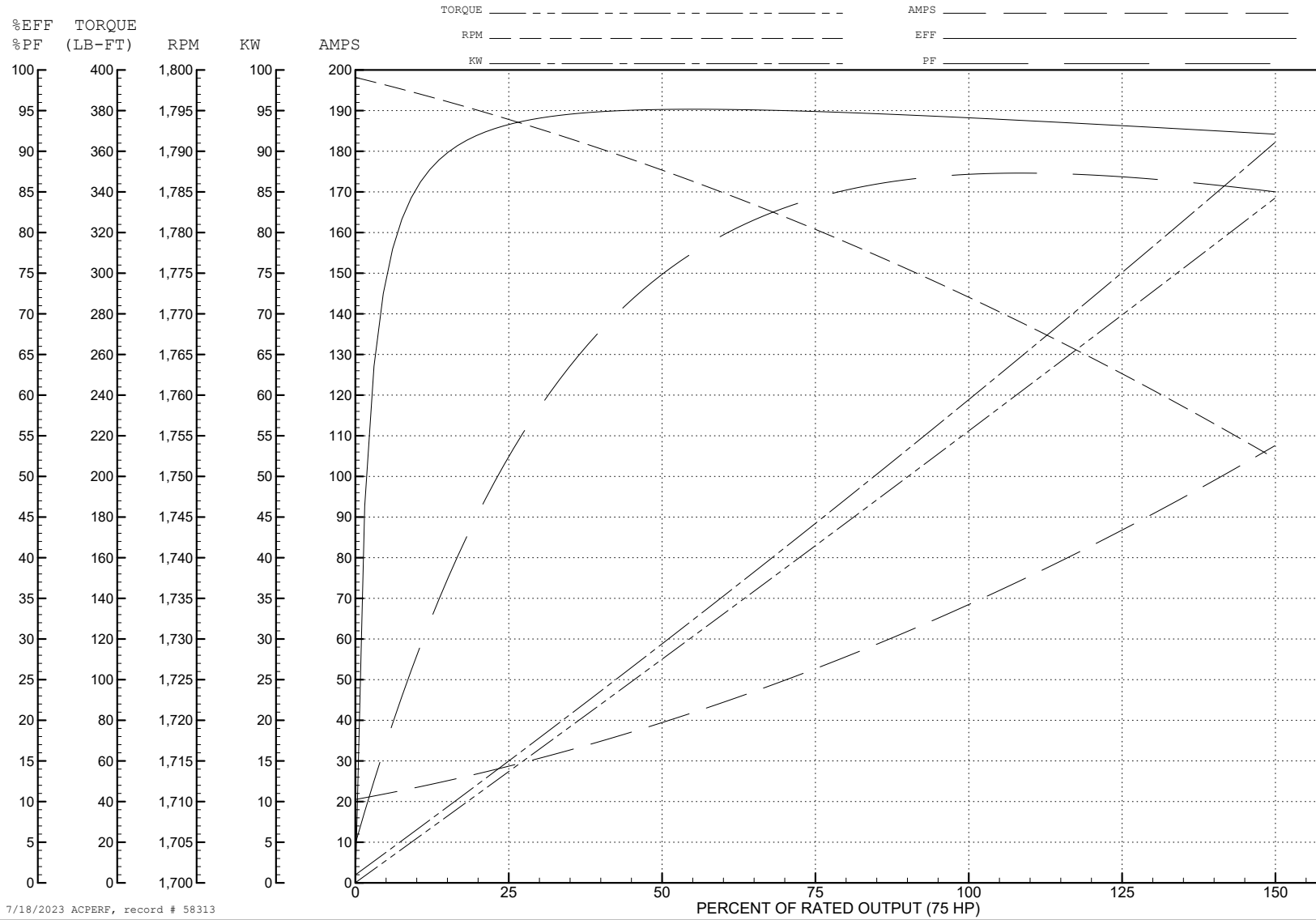
ABB Motors and Mechanical Inc.

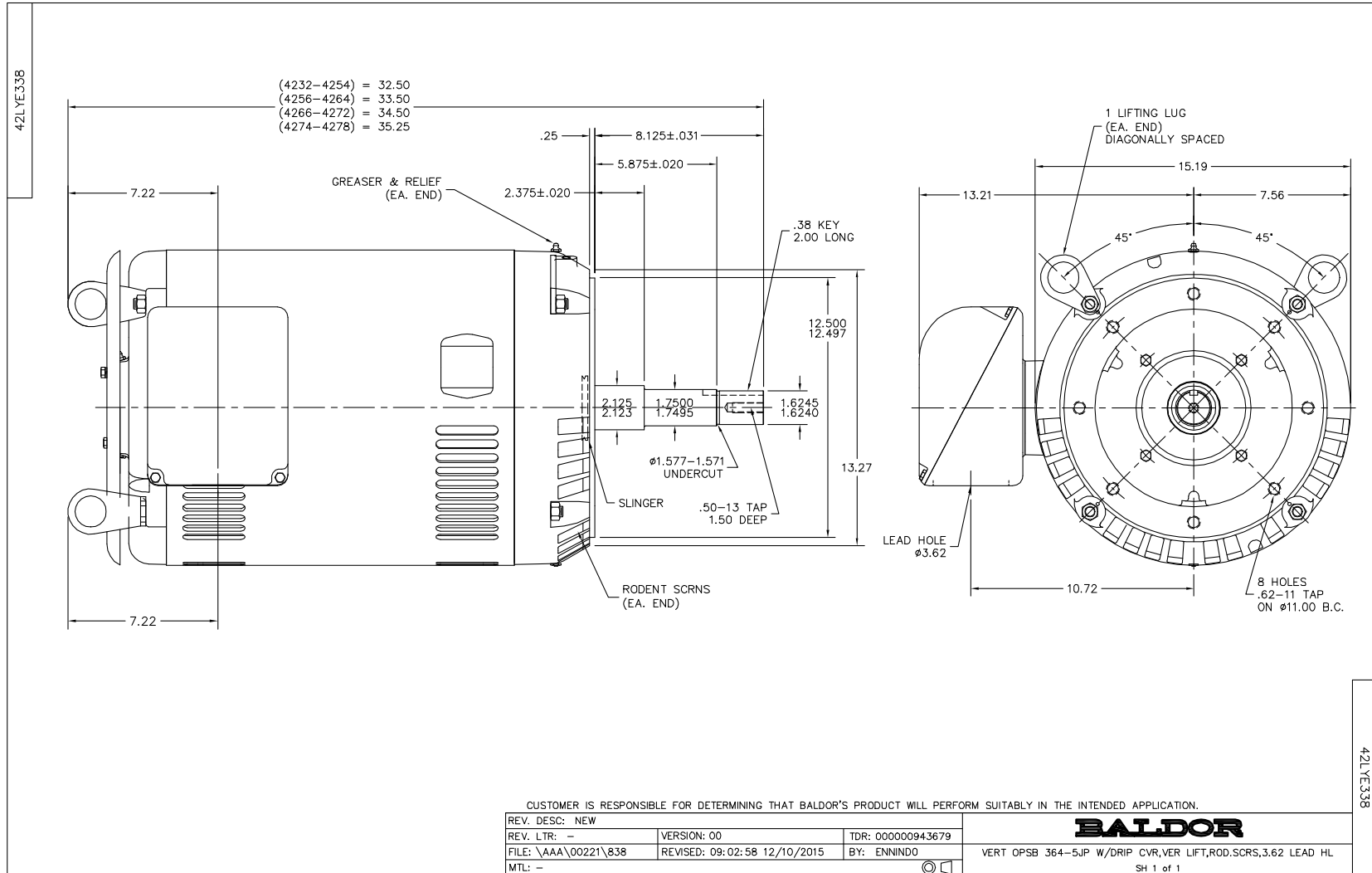
WINDING # 42WG104

75 HP 3 PH 60 HZ 1770 RPM 575 V 4272M

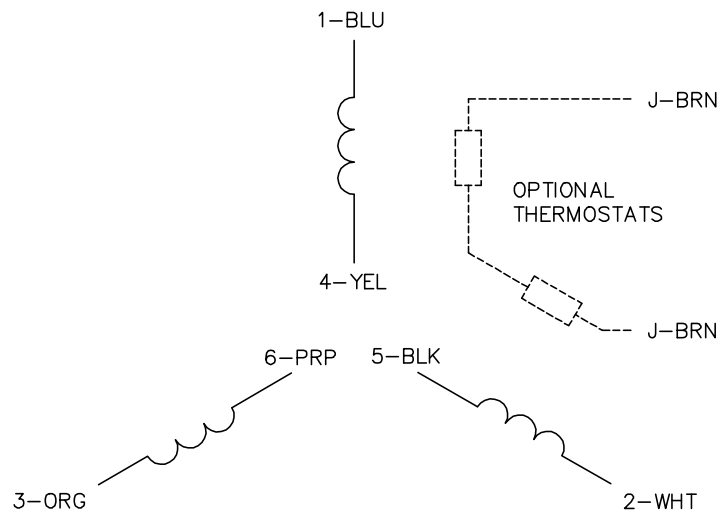
Typical performance - not guaranteed values.

TORQUES (LB-FT): PO=585 PU=301 LR=348 LRA=402

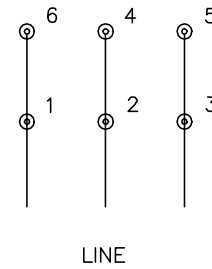




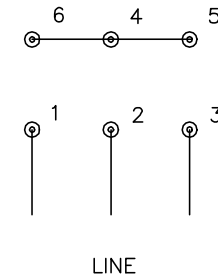
CD0382



RUN CONNECTION (1D)



START CONNECTION (1Y)



NOTES:

1. INTERCHANGE ANY TWO LINE LEADS TO REVERSE ROTATION.
2. OPTIONAL THERMOSTATS ARE PROVIDED WHEN SPECIFIED.
3. ACTUAL NUMBER OF INTERNAL PARALLEL CIRCUITS MAY BE A MULTIPLE OF THOSE SHOWN ABOVE.
4. LEAD COLORS ARE OPTIONAL. LEADS MUST ALWAYS BE NUMBERED AS SHOWN.
5. FOR ACROSS-THE-LINE STARTING, USE 'RUN' CONNECTION.

CD0382

REV. DESC: ADD CLASS CONN00000007		
REV. LTR: F	VERSION: 01	TDR: 000001099922
FILE: \AAA\00005\243	REVISED: 09:05:32 02/19/2019	BY: ENBRIRO
MTL: -	© □	

BALDOR - RELIANCE®

3PH, SV, 6 LEADS, Y START/D RUN

SH 1 of 1